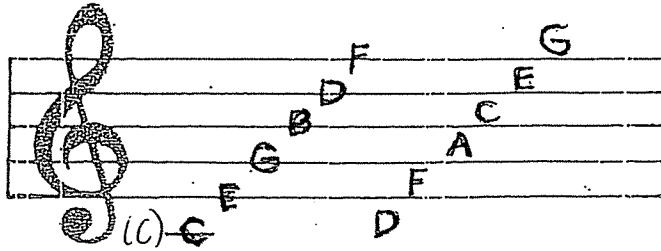


Getting Started in Treble Clef

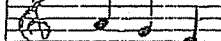
One day in music class Miss Jackson handed each of us a strange-looking story -- like this one. It had some words missing and had little staves with notes. She put this drawing on the board.

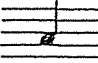
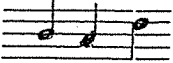
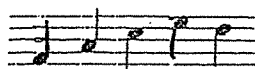


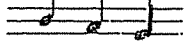
After telling us that each note has a name and a special place on the staff, she said, "If you can name the notes correctly and put the letters under the notes, you can complete the story. Then we will take turns reading it to the class."


At first, the children said it was very hard to do. As they kept on working with help from Miss Jackson, they decided it was not only easy, but it was fun.

See if you can complete this mini-story:

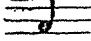
Most of the children in the class were eight years of  . Some were very

good, but  few liked to be  . The teacher 

the class and said that she had a  of candy for those who could

 good all day.

The children thought it was just a  , but they decided to 

good anyway. At the end of the day each one got  candy. Are you

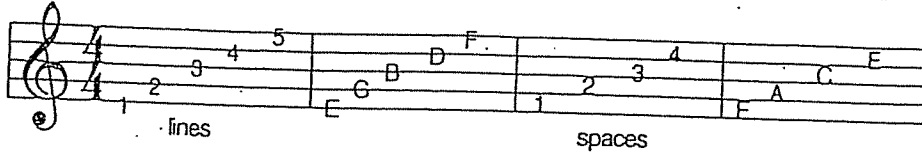
having a good day?



How Notes are Named in the Treble Clef

Name: _____ Class: _____

The Staff: Music is written on a five line staff. Notes can be placed on lines or in spaces. The lines and spaces are numbered from the bottom to the top. At the beginning of a staff a clef is given. The *treble clef* circles the note G, and is used for treble, or higher notes.



Write the letter name of the notes found on the lines. Use capital letters.

1. _____

Write the letter name of the notes found in the spaces. Use capital letters.

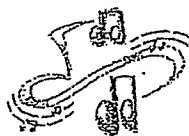
Naming Notes

Name: _____ Class: _____

The first seven letters of the alphabet are used to name notes. A B C D E F G and then the letters begin from A again. You can see the names of the notes on the music staff beginning on C:

A music staff with a treble clef. Ten notes are placed on the lines and spaces. Below each note is its letter name: C (bottom line), D (first space), E (second line), F (second space), G (third line), A (third space), B (fourth line), C (fourth space), D (fifth line), and E (top line).

Name the following notes. You may use the music staff shown above as a guide.



1. _____


2. _____

3. _____

4. _____


Counting Music


This is a quarter note (ta) :  It is held for one beat.

This is a pair of eighth notes (ti-ti) :  Together they equal one beat

This is a quarter rest (sh) :  A rest is a silent beat.




This is a half note (too-oo) :  It is held for 2 beats.

This is a dotted half note (ta-a-m) :  It is held for 3 beats.

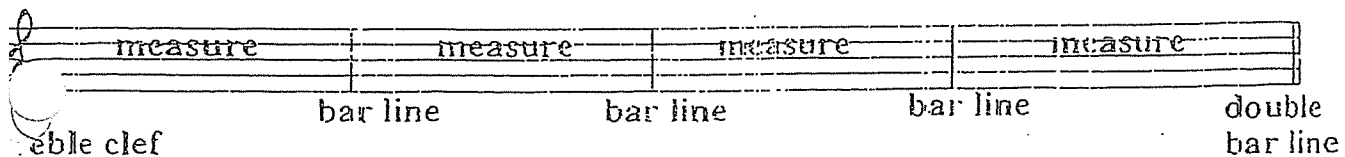
This is a whole note (ta-a-a-a) :  It is held for 4 beats.

Tell how many beats each note or rest is held for:

1.  _____ beats 2.  _____ beats 3.  _____ beats

4.  _____ beats 5.  _____ beats 6.  _____ beats

Music is divided into short sections called measures or bars. The measures are marked off by bar lines. The last bar line in each piece is a double bar line.



Name: _____

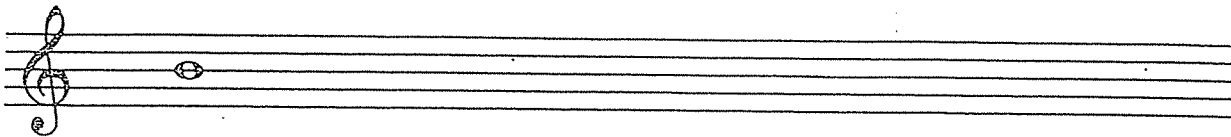
Class: _____

THE BASICS

QUIZ

The Musical Staff

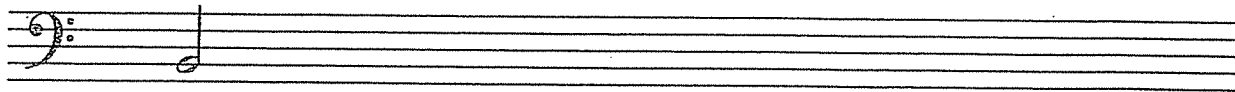
DIRECTIONS: Draw a whole note on the line or in the space shown below. One example has been given.

1. 

On the 3rd line In the 1st space On the 4th line In the 3rd space On the 1st line

(blanche)

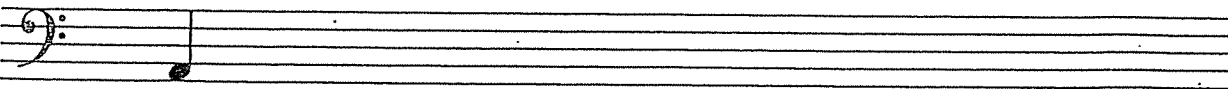
DIRECTIONS: Draw a half note on the line or in the space shown below. One example has been given.



On the 2nd line On the 4th line In the 4th space On the 5th line In the 2nd space

(ta)

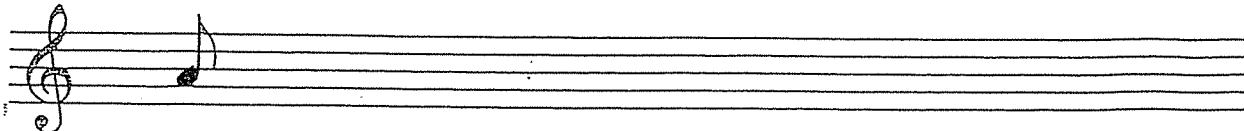
DIRECTIONS: Draw a quarter note on the line or in the space shown below. One example has been given.

3. 

In the 1st space On the 1st line In the 3rd space On the 4th line In the 4th space

(ti)

DIRECTIONS: Draw an eighth note on the line or in the space shown below. One example has been given.

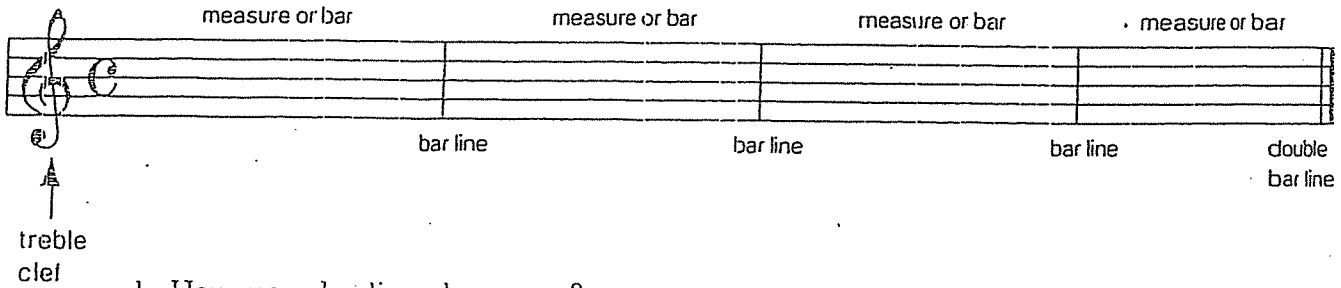


In the 2nd space On the 3rd line In the 4th space On the 1st line In the 1st space

Student Worksheet 5: Measure and Bar Lines

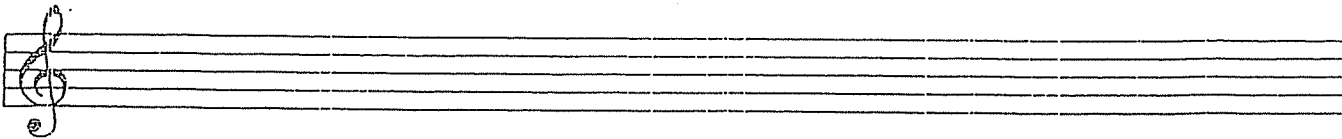
Name: _____

Music is divided into short sections called measures or bars. The measures are marked off by bar lines. There is a double bar line at the end of each piece of music.

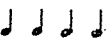
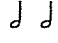

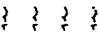


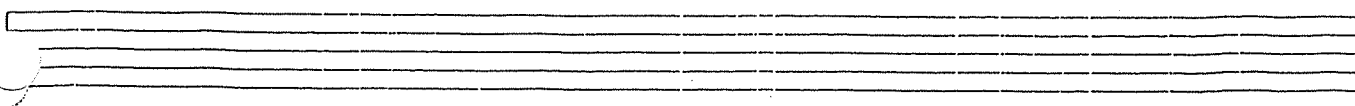
1. How many bar lines do you see? _____
2. How many measures do you count? _____
3. How many double bar lines are there? _____
4. What is the symbol at the beginning of the line called? _____

To Do: Divide the staff into four measures. Draw a double bar line at the end of the staff. Practice drawing treble clefs on this staff.

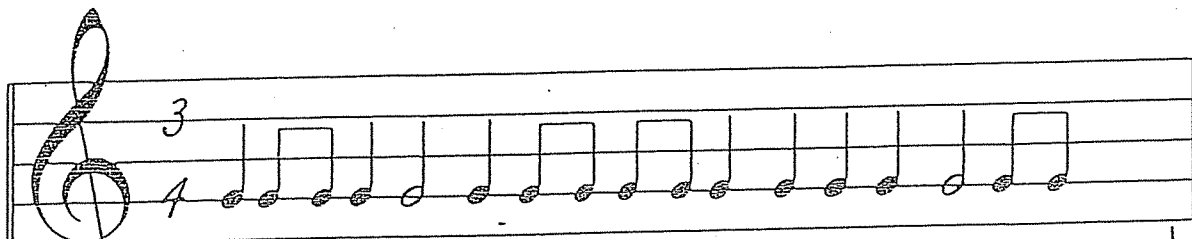
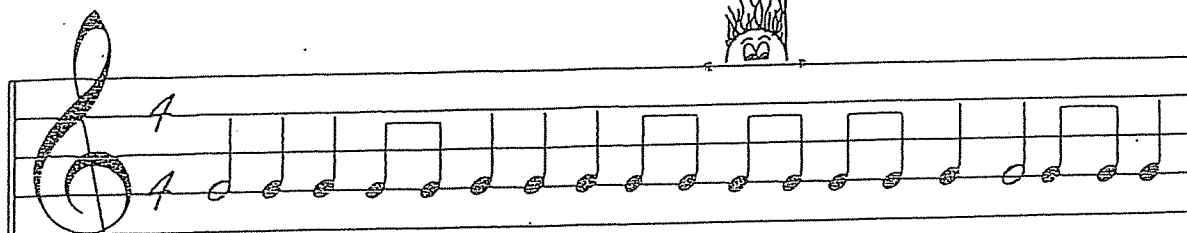


To Do: Draw the symbols and notes on the staff, following the directions below.

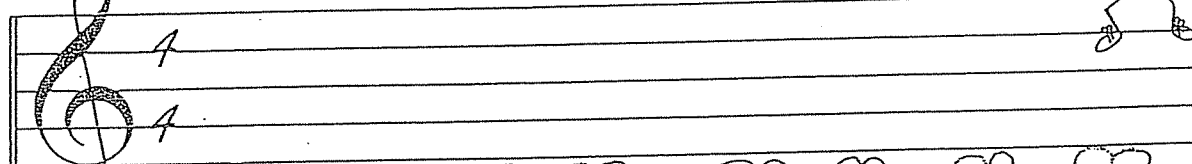
1. Draw a treble clef at the beginning of the staff
2. Divide the staff into four measures.
3. Put 4 quarter notes in the first measure.  (Ta)
4. Put 2 half notes in the second measure.  (Blanche)
5. Put a whole note in the third measure. 
6. Put 4 quarter rests in the fourth measure. 
7. Put a double bar at the end of the music.



Put in the bar lines.



Place in notes and bar lines to the time. Compose 2 measures.



Use this color code to color these notes:

G = Green

E = Yellow

A = Red

B = Blue

